

THIS IS HOW TO ADD A LOCOMOTIVE, TURNOUT OR A CONSIST TO THE ENGINE DRIVER APP.  
NOTE: THIS WRITES THE DATA FOR THE ENGINES AND TURNOUTS ONTO THE MRC Wi-Fi MODULE.

In the Engine Driver App. - Pick the 3 square icon in the top right of the App.  
Select MRC Settings.

You can also access the MRC Wi-Fi module from a computer.  
Connect your internet access to the MRCWi-Fi Module. Then type in 192.168.7.1 in the Browsers Web Address .  
Either way will get you to the MRC Settings.

This is where you will add Locomotives that will appear under the App's "-OR- Select from Roster/Consist Entries".  
This way you will have a list of Locomotives to select from and Name as you like.

Note:

You can add locomotives in the App under "Enter Locomotives Address to Acquire" add address and activate it.  
They will show up in the "-OR- Select from Recent Locomotive".

But you cannot edit the name of the Locomotive.

This is where you will add Turnouts that will appear under the App's "Turnouts (click state to toggle)".  
This way you will have a list of Turnouts that will always be there to access.

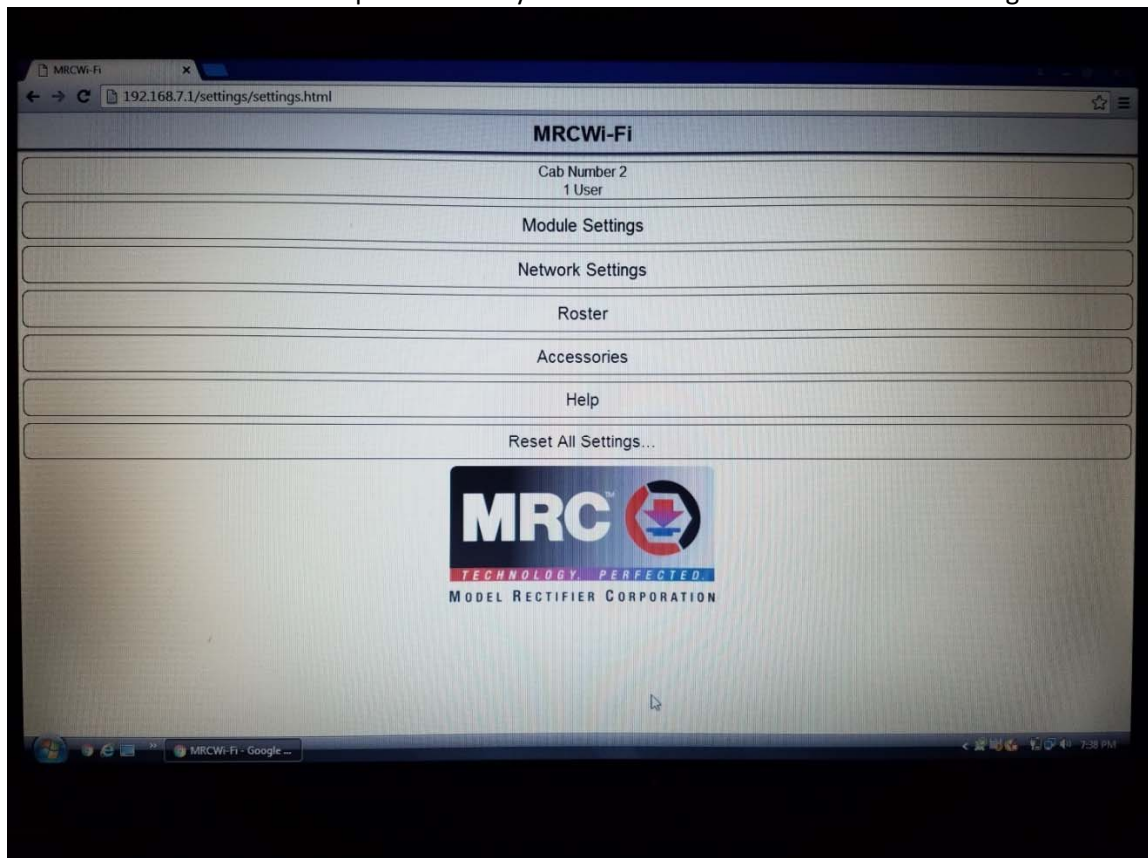
Note:

You can add Turnouts in the App under "Enter Turnout #", put in the turn out address and activate it.  
But you will only have one listed at a time after you enter the address.

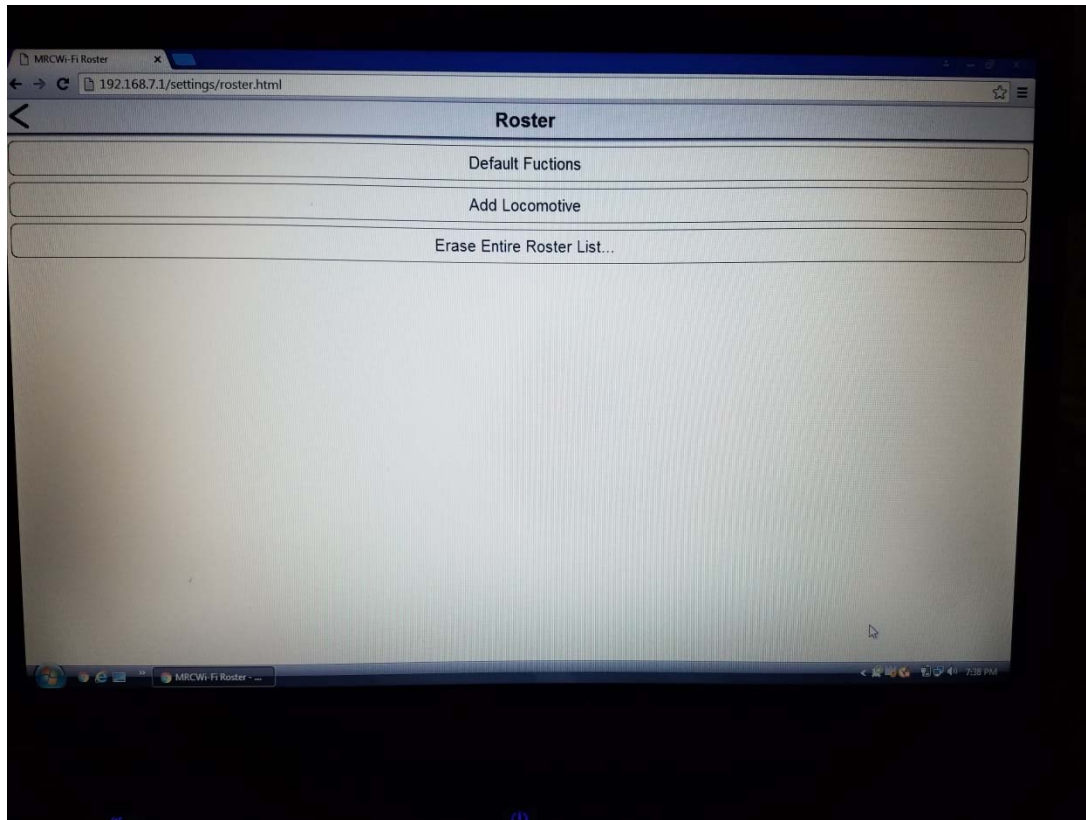
But you cannot enter a name for the Turnout.

NOTE: DO NOT USE THE # SYMBOL IN NAMES. IT WILL LOCK UP THE NAME SO YOU CANNOT EDIT IT LATER.  
THIS IS TRUE OF THE ACCESSORIES AND MAY BE THE SAME FOR THE ROSTER, I DID NOT TRY IT IN THE ROSTER,  
DID NOT WANT TO LOCK UP THE ROSTER LIKE I DID THE ACCESSORIES.  
THE ONLY WAY TO GET RID OF THE # SYMBOL AND EDIT THE ACCESSORY IS TO RESET ALL SETTINGS.

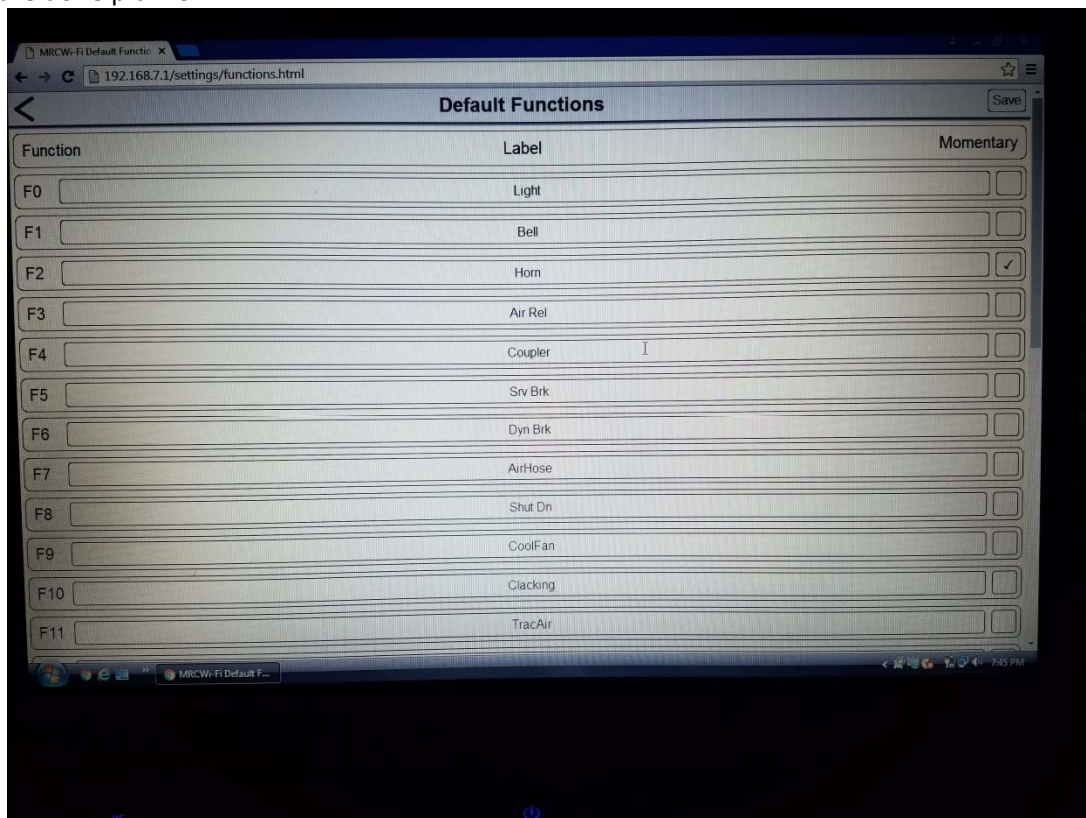
Below will be screen shots from a computer but they are similar in the APP under MRC Settings.



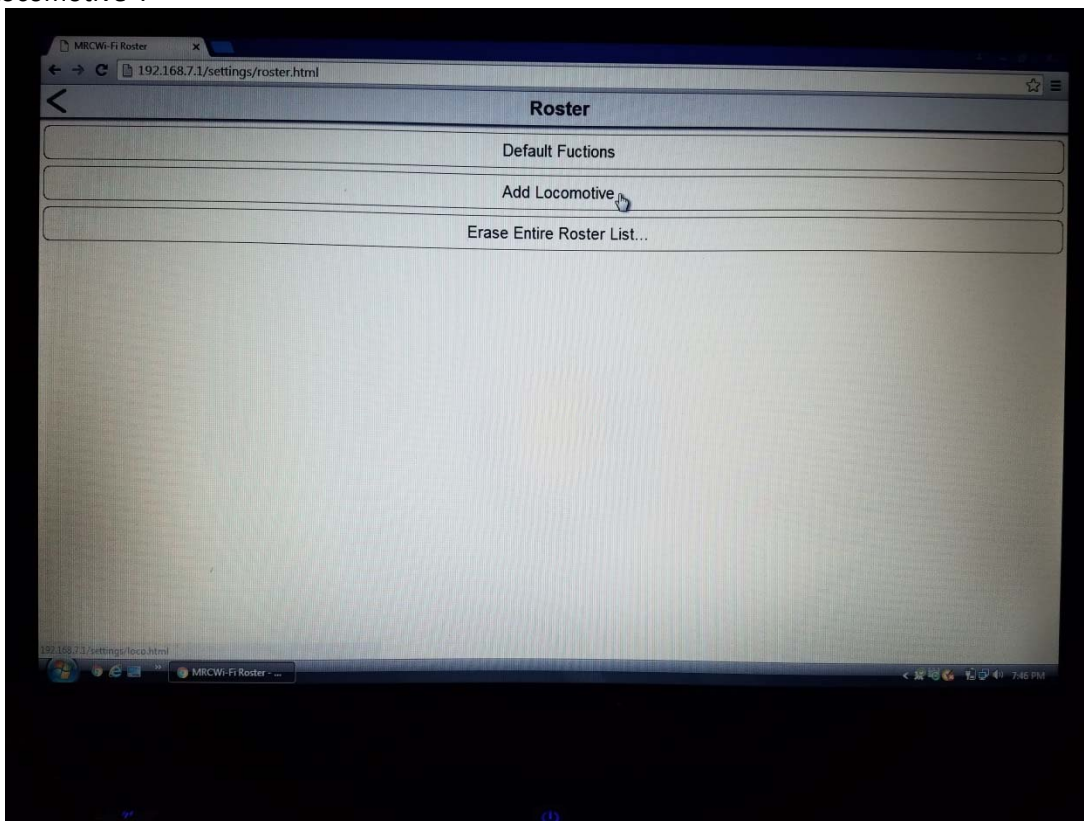
First - Set up your Default Functions.  
Pick "Roster" Shown in previous picture.  
Then Pick "Default Functions".



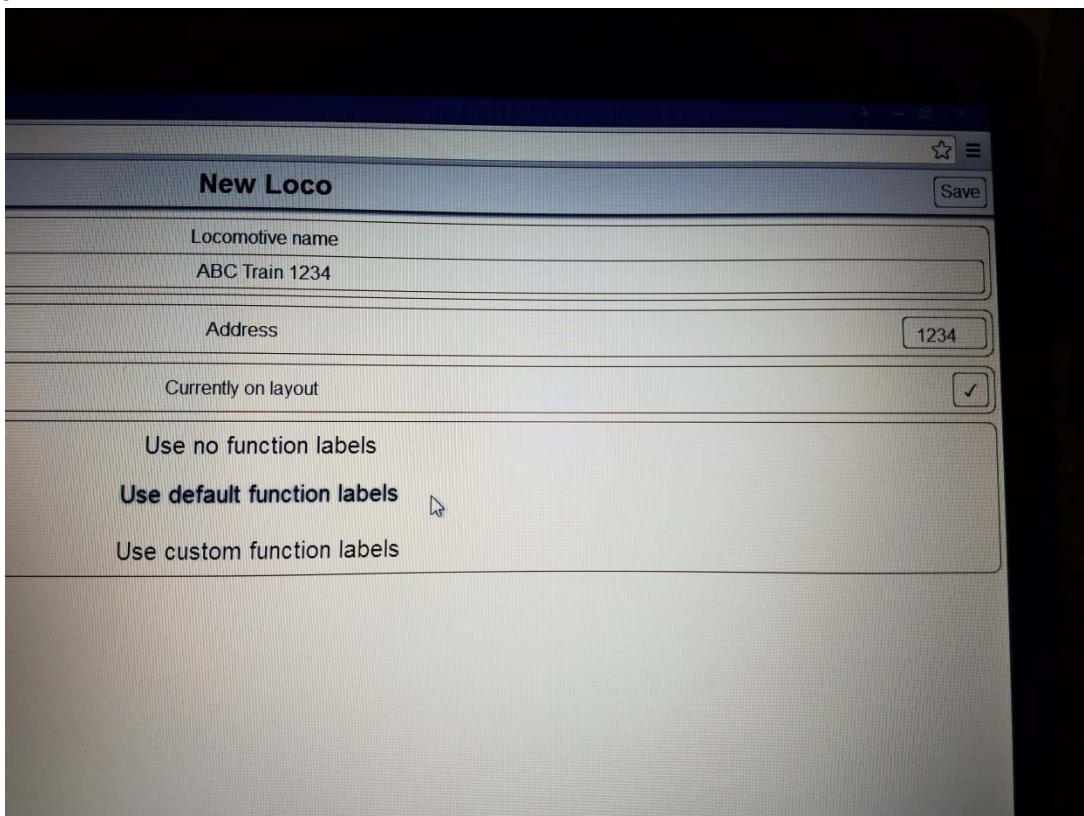
Type in the function you want for the F numbers.  
Pick "Momentary" if you want to hold down the button to continually activate function – Like a Horn.  
In the App you only have 7 spaces of text that will show up. So keep it short.  
When you are done pick "SAVE".



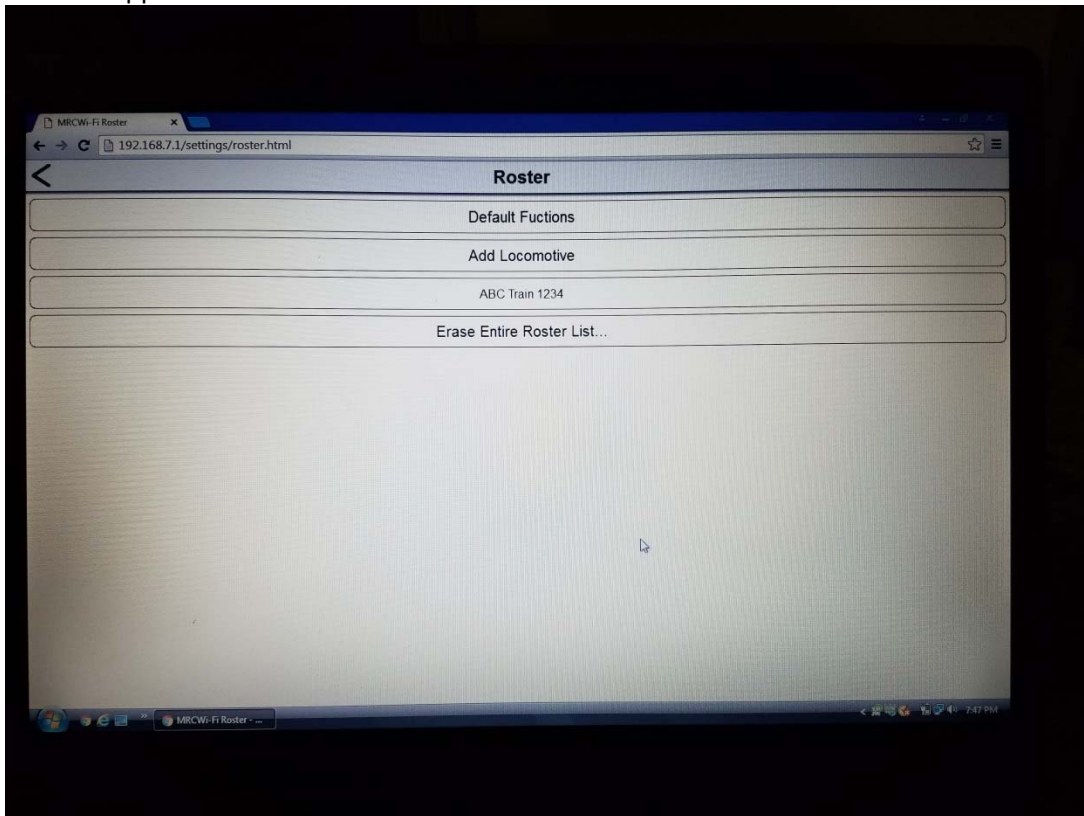
Next - Set up your Locomotives.  
Pick "Add Locomotive".



Type in the name you want under the Locomotive Name and then type in the Decoder Address of the Locomotive. Then select the "Use Default Function Labels" button. If you want to change from the Default Function Labels, Select "Use no function labels" or "Use a custom function labels". For Custom, change the functions as needed. Then Pick "SAVE".



The Locomotive will appear in the list. "ABC Train – 1234"

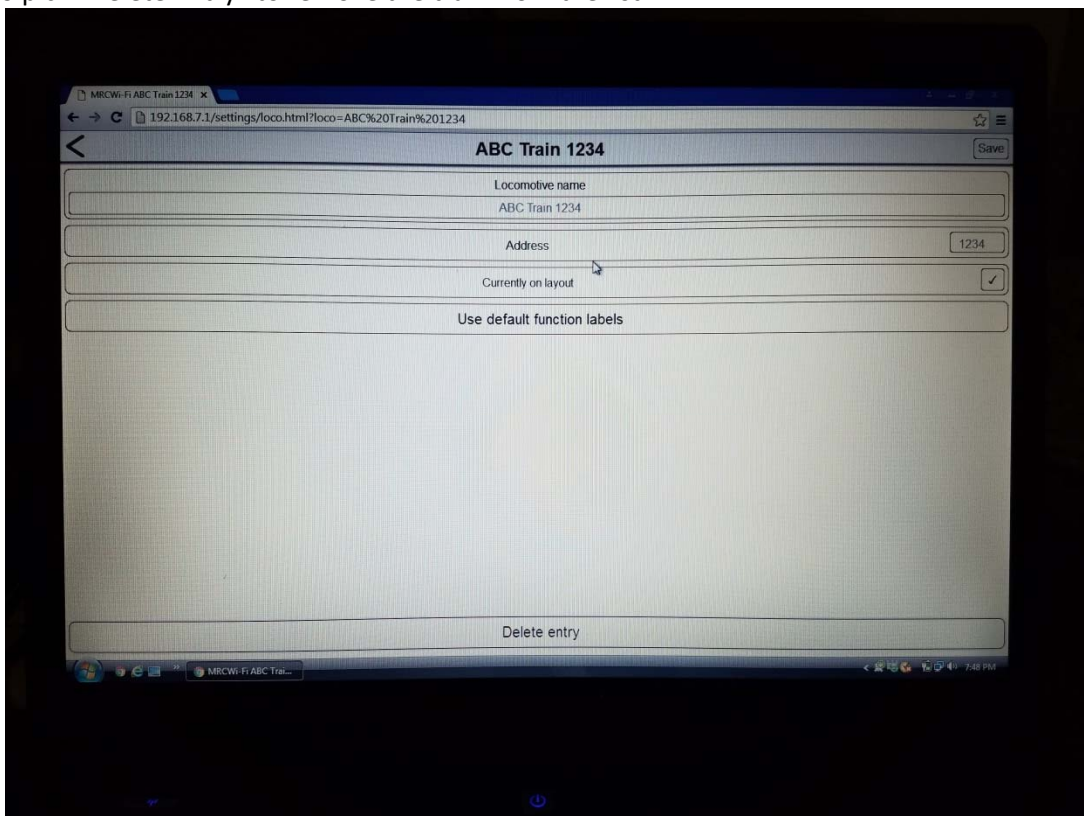


You can select any locomotive at any time and it will take you to the Locomotive Screen.

Then edit the name or address.

Just pick "SAVE" when you are done.

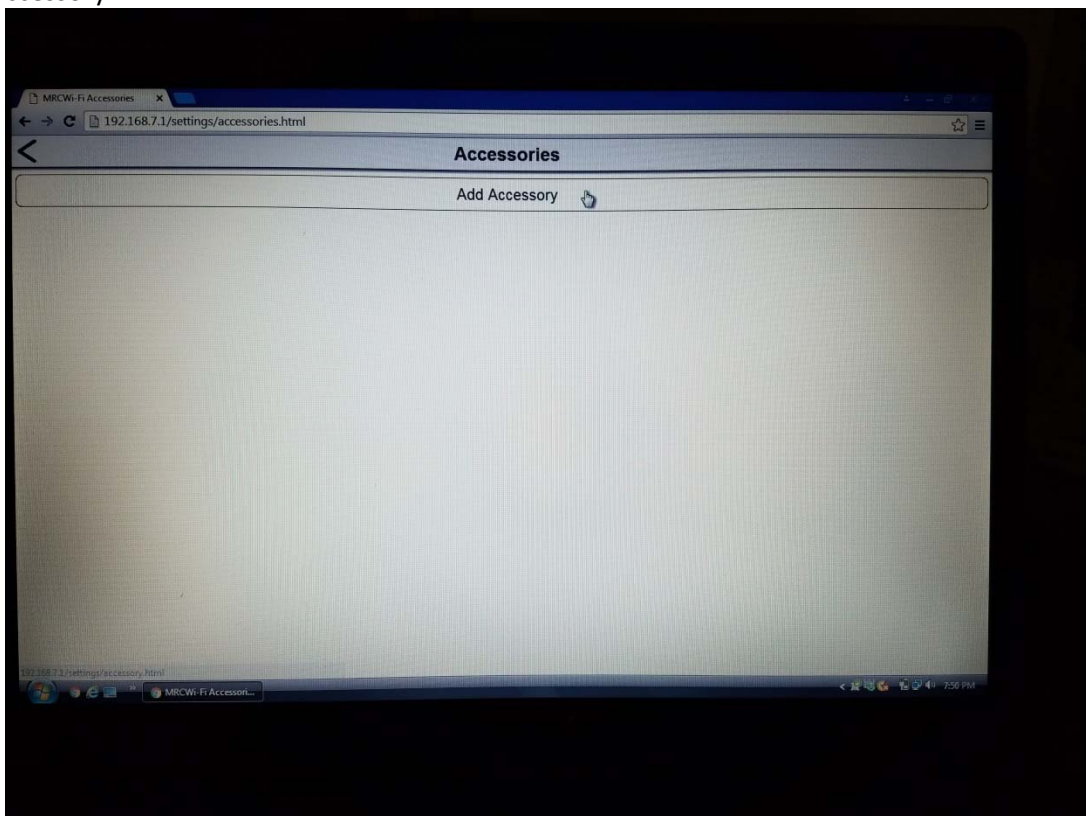
You can also pick "Delete Entry" to remove the train from the list.



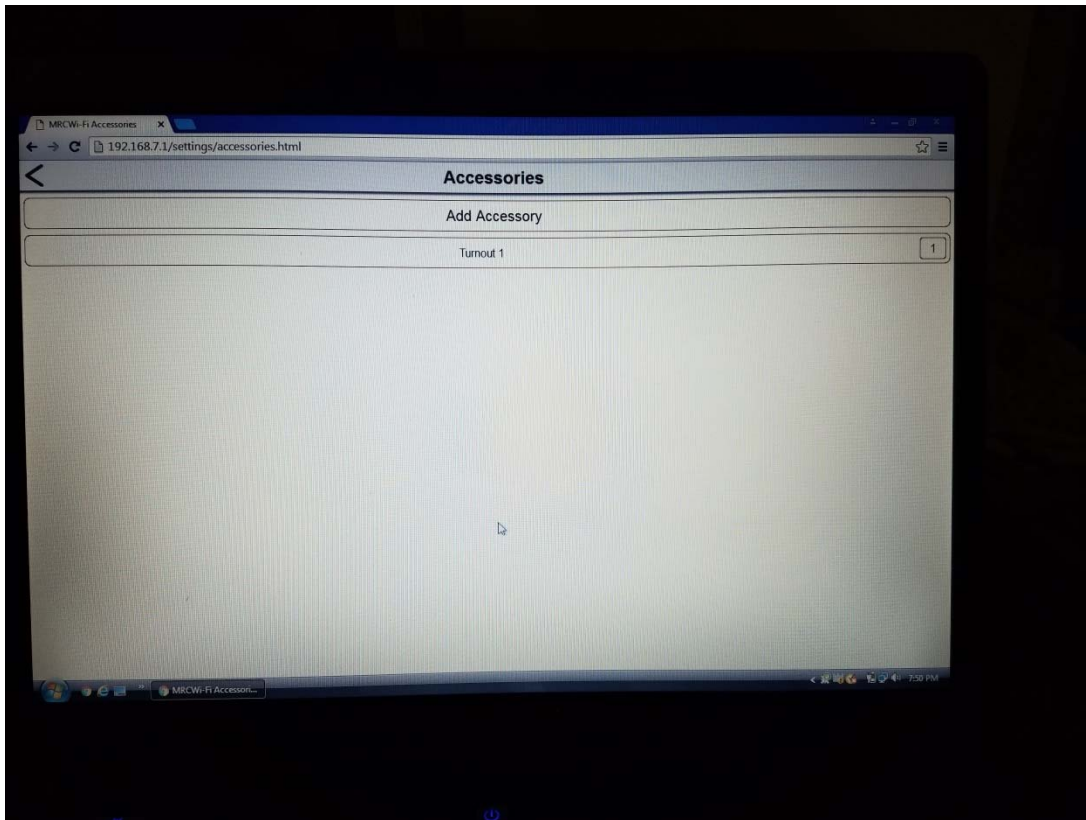
From the Roster Menu, Pick the back arrow on the top left to go back to main screen.  
Then Pick "Accessories" to set up your Turnouts.



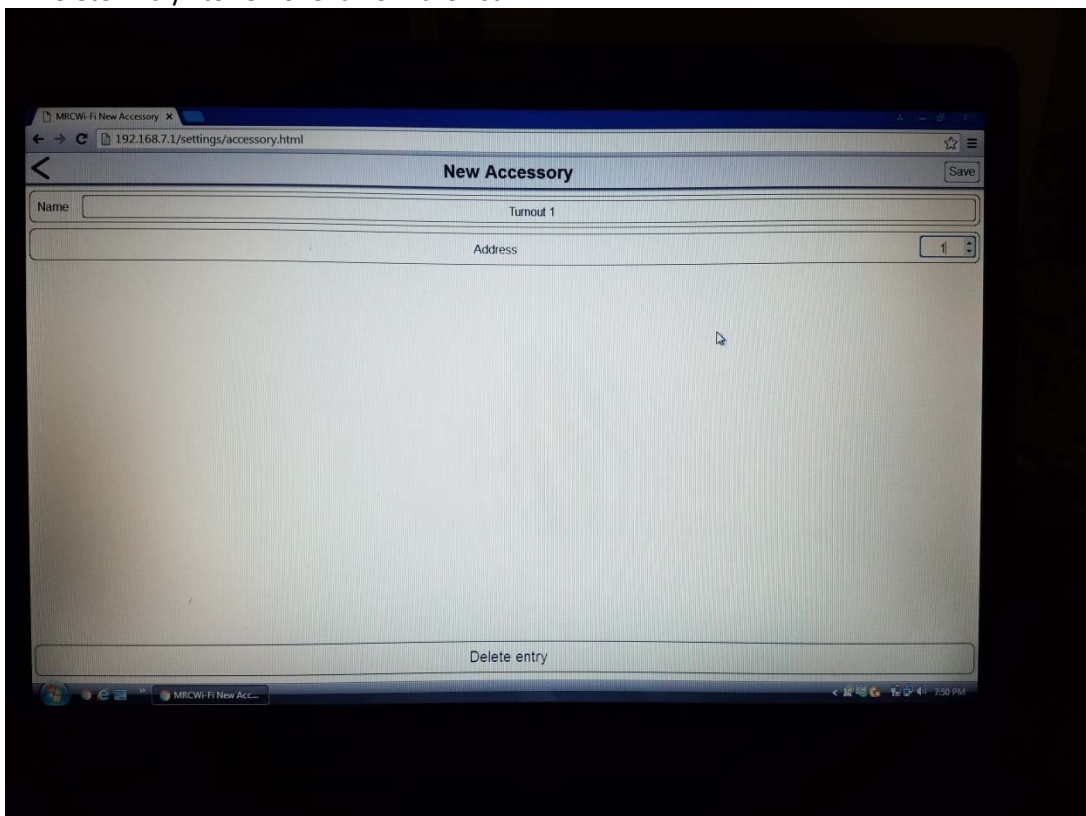
It is similar to the adding locomotives to the Roster.  
Pick "Add Accessory"



Type in the name of the Turnout. Type in the Decoder Address of the Turnout.  
Pick "SAVE".  
It will appear in the Accessories list.



Just like in the Roster.  
In the list of the turnouts, you can pick any of the Turnouts  
Then edit the Name of the Turnout or the Decoder Address. Then pick "SAVE".  
You can pick "Delete Entry" to remove it from the list.



There are two other tabs in the menu.  
I did not change any of the default settings

**Module Settings** Apply

Cab number 2

Track power toggling allowed ✓

Accessory control allowed ✓

Fastclock shown ✓

Time until eStop upon disconnect 45

Settings passkey

Confirm passkey

**Network Settings** Apply

IP Address: 192.168.7.1:12090  
1 User

Network name suffix

Wi-Fi passkey

Confirm passkey

The MRCWi-Fi module must be restarted for changes to take effect.

To set up a Consist.

Set up an Advanced Consisting.

This only works with decoders that have the CV19 to support this feature.

See Decoder documentation or DCC System manual for this process.

After that is set up then,

Go to Roster, Pick "Add Locomotive"

Type in the name you want for the Consist

Add the Decoder Addresses set up in CV19 value from above.

Pick "SAVE"

Go to the App.

Under Preferences, Set up the Preferences you want for consist lighting. "Control Consists Lights on Long"

You Can use the Engine Driver App to create the consist.

The only problem is once you release it, it is not saved and you have to recreate it and set all the settings again.

## **To Run The Trains:**

After you are all done then go to the Engine Driver App. And open it up.

Note: If you are logged into the App,

Exit the App and go back into it. Do this anytime you make changes, so they will correctly appear.

Now you will see:

Your Locomotives under the Apps "-OR- Select from Roster/Consist Entries"

Your Turnouts under the Apps "Turnouts (click state to toggle)"

If you have to reset the Wi-Fi Module for any reason.

The "Reset all Setting " button does not work in the MRC Settings. As far as I can tell.

You have to.

Select "Roster"

Select "Erase Entire Roster List"

Follow the instructions. Hold down the reset button on the module and pick the reset button on the screen.

Picking the button on the screen appears as if it does not pick but I try picking it a couple of times.

After that is done, unplug the Data Cable from the module and plug it back it to recycle the power.

It should be reset now, if not try the above again.